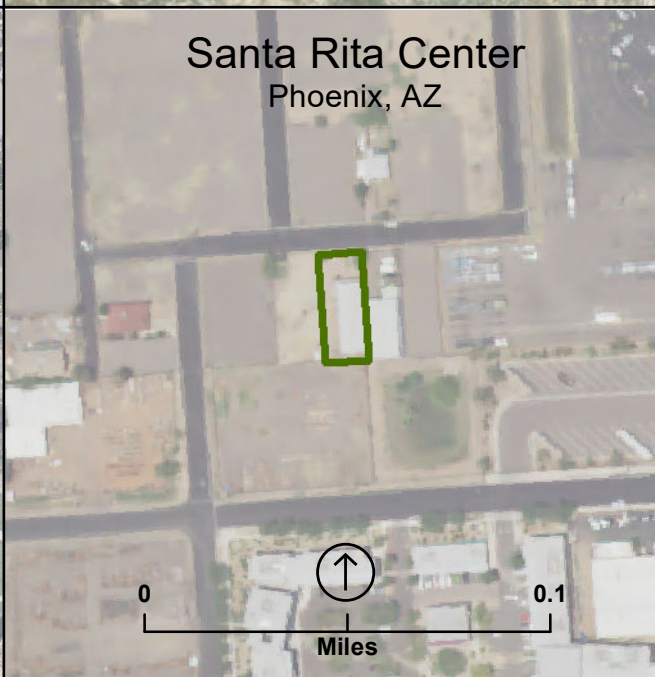
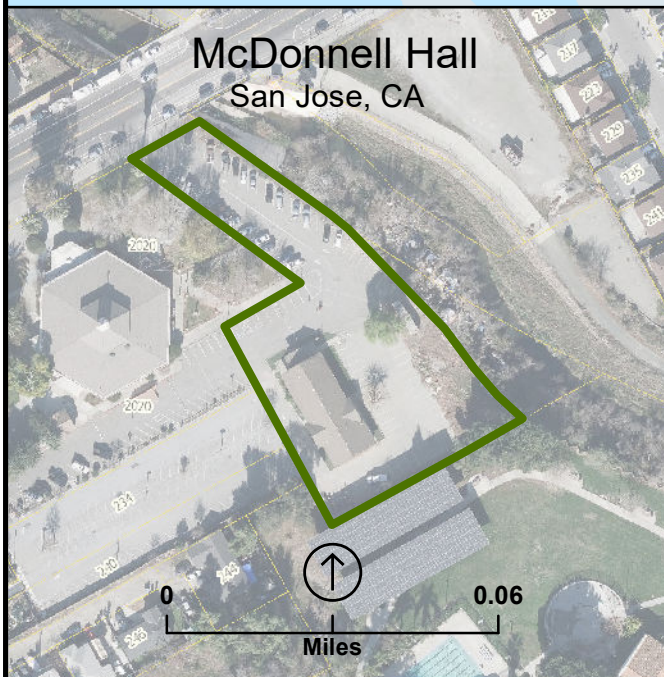
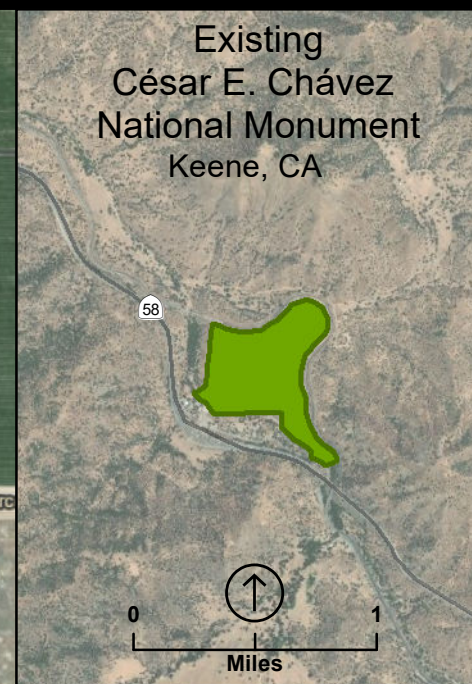


César Chávez National Historical Park Proposed Boundary

National Park Service
U.S. Department of the Interior



- Proposed NPS Boundary
- National Monument

OFFICE: Lands Resources Program Center
REGION: DOI Regions 8 and 10
PARK: César Chávez National Historical Park
TOTAL PROPOSED ACREAGE: \pm 155.2
MAP NUMBER: 502/179857
DATE: MARCH 2022
Sources: NPS, USGS, Santa Clara County
and City of Phoenix, AZ.

Sources: NPS, USGS, Santa Clara County
and City of Phoenix, AZ.